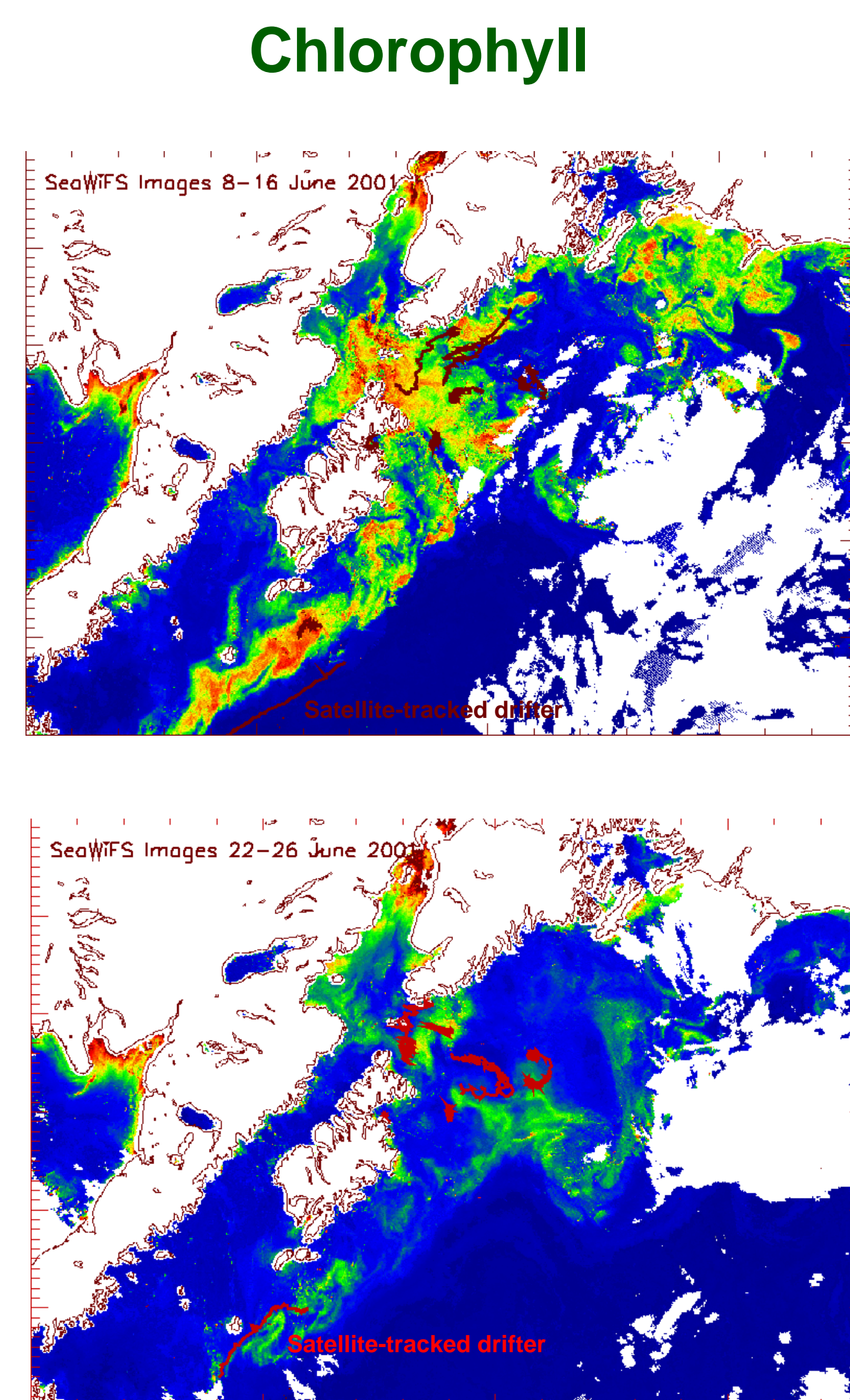
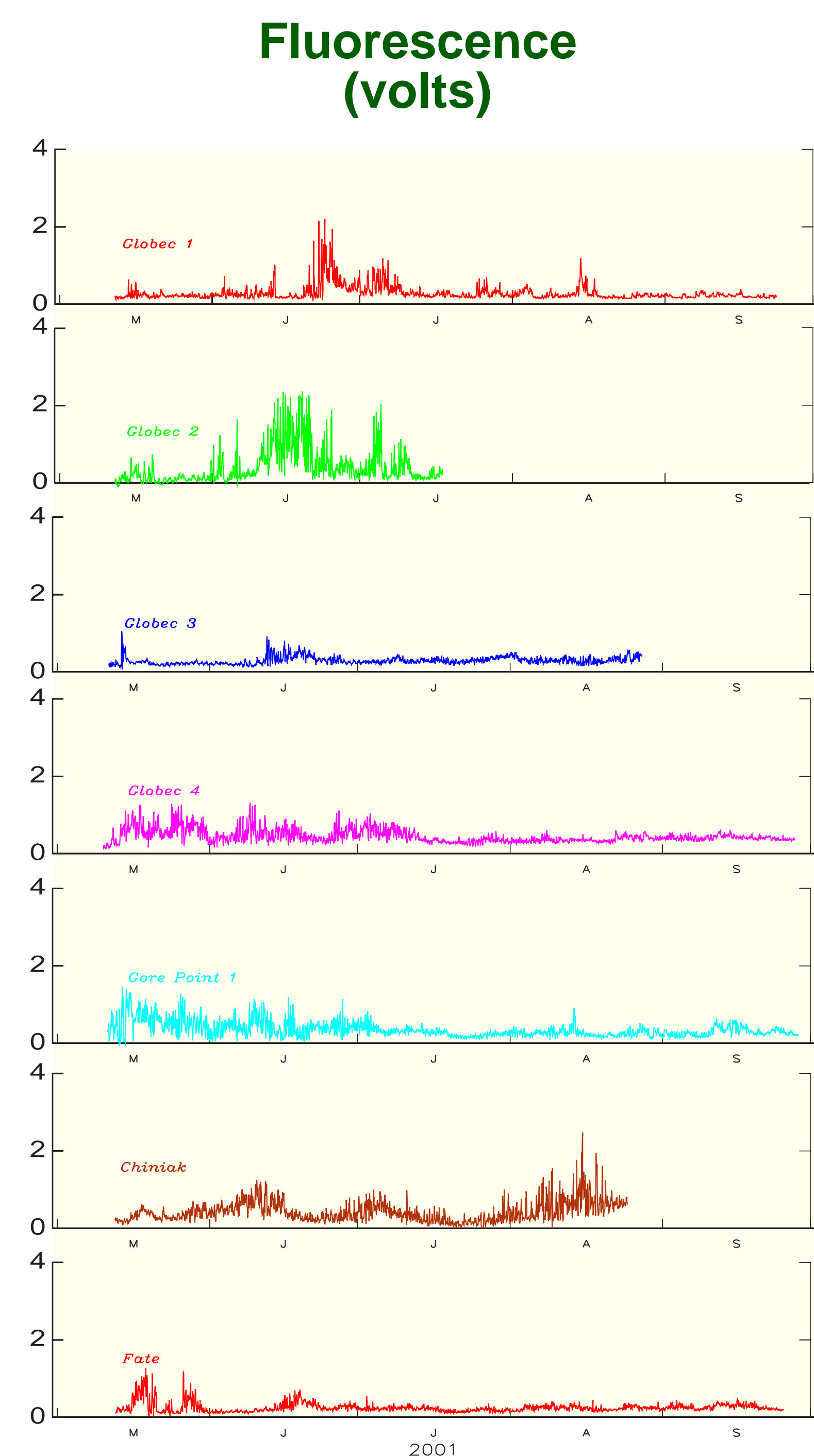
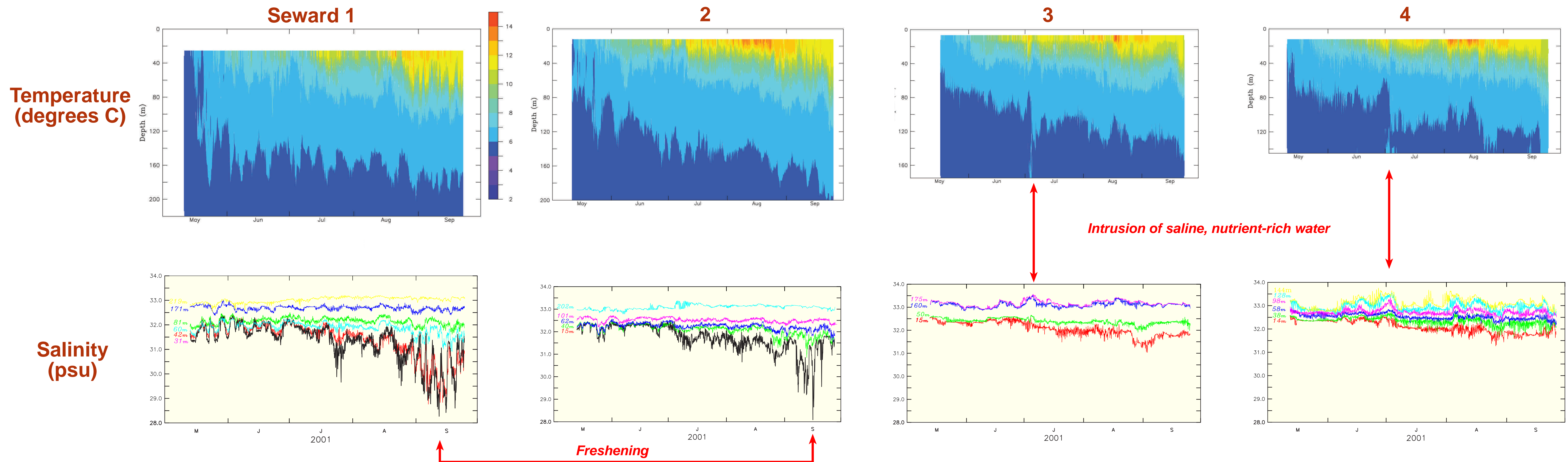


A Selection of Data from the FOCI and GLOBEC Moorings 2001

Phyllis Stabeno • NOAA, Pacific Marine Environmental Laboratory, Seattle, WA

During Spring and Summer 2001, 20 moorings were deployed in the Gulf of Alaska by FOCI. Most were biophysical moorings, measuring temperature, salinity, fluorescence and currents. Two surface moorings measured meteorological variables and one mooring successfully measured nitrate. Shown here is a subset of the data that was recovered in September and October.



Productivity in the GOA varies on short temporal and spatial scales. Periods of elevated fluorescence at 15 - 20 meters (left) are more prolonged around Kodiak and of shorter duration nearshore on the Seward Line.

