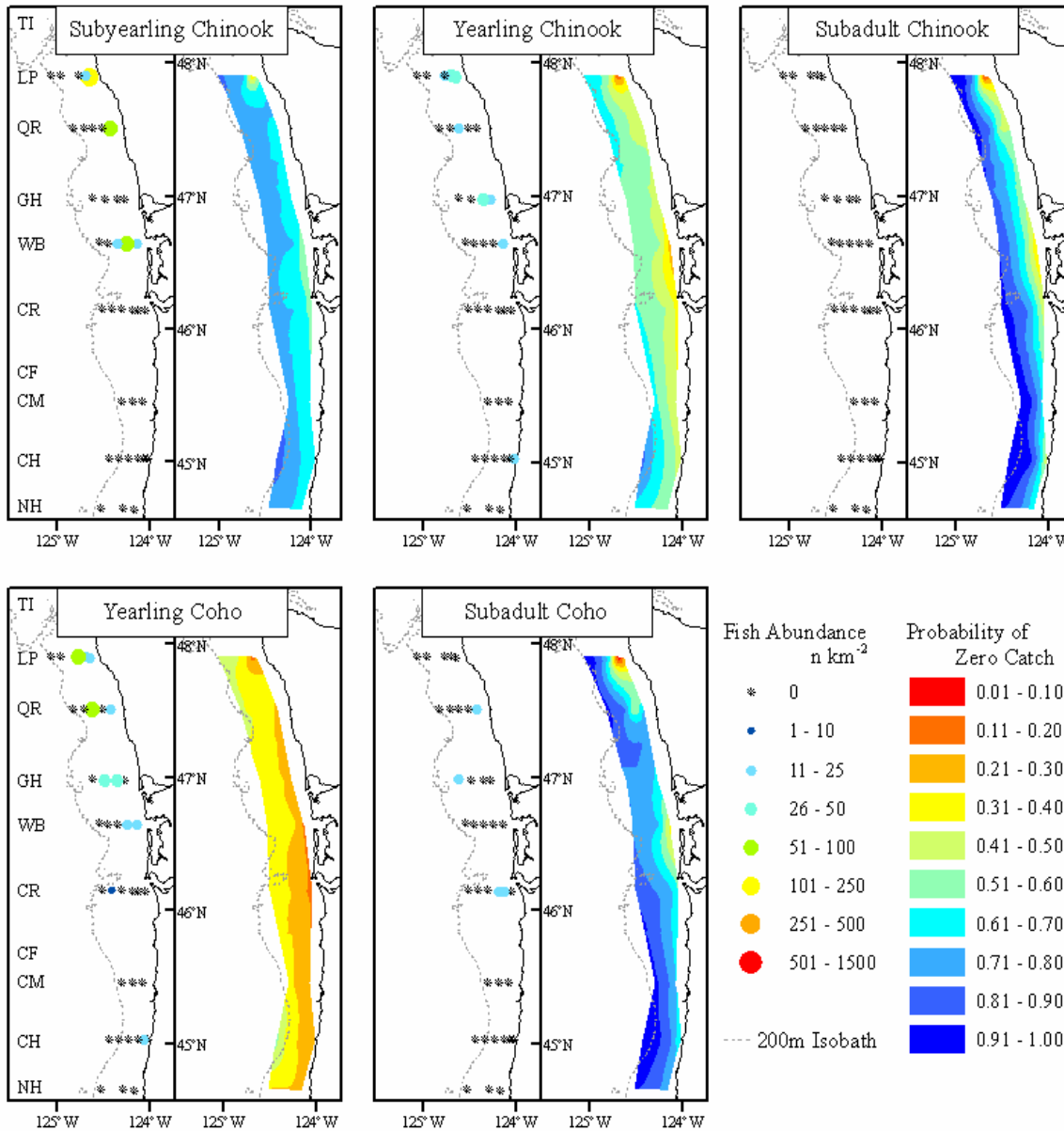


Prediction for 2005



- **Subyearling Chinook:**
 Absence accuracy: 100%
 Presence accuracy: 17%
 Overall: 87%
- **Yearling Chinook:**
 Absence accuracy: 80%
 Presence accuracy: 75%
 Overall: 79%
- **Subadult Chinook:**
 Absence accuracy: 79%
 Presence accuracy: N/A*
 Overall: 79%
- **Yearling coho**
 Absence accuracy: 4%
 Presence accuracy: 100%
 Overall: 33%**
- **Subadult coho**
 Absence accuracy: 88%
 Presence accuracy: 100%
 Overall: 89%

Life history types	Predictor	$p > t$	Goodness-of-fit $p > \chi^2$
Subyearling Chinook	<i>Latitude*</i>	<0.001	0.19
	Longitude	<0.001	
	Chlorophyll	0.010	
Yearling Chinook	<i>Latitude*</i>	<0.001	0.47
	Longitude	<0.001	
	Chlorophyll	0.001	
Subadult Chinook	Chlorophyll	<0.001	0.03**
	<i>Latitude*</i>	0.001	
	Depth	<0.001	
	Temperature	0.025	
Yearling coho	Depth	<0.001	0.14
	Temperature	0.025	
	Chlorophyll	0.005	
Subadult coho	Depth	<0.001	0.02**
	Chlorophyll	0.005	

Subyearling Chinook: September

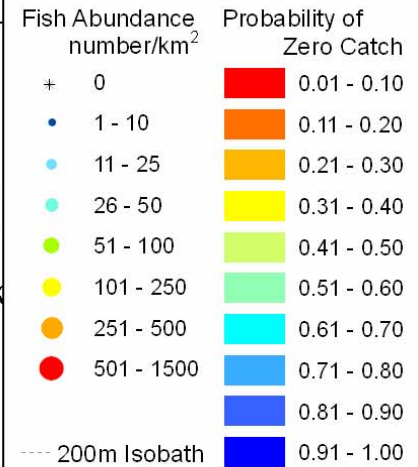
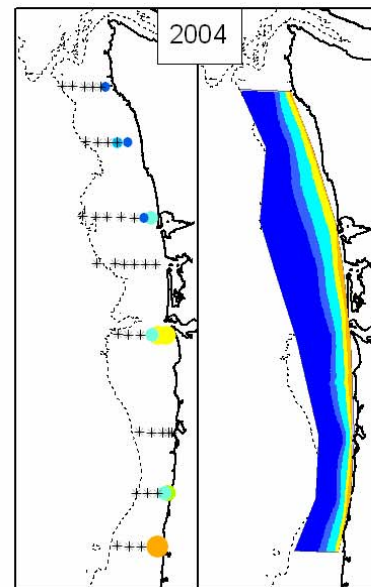
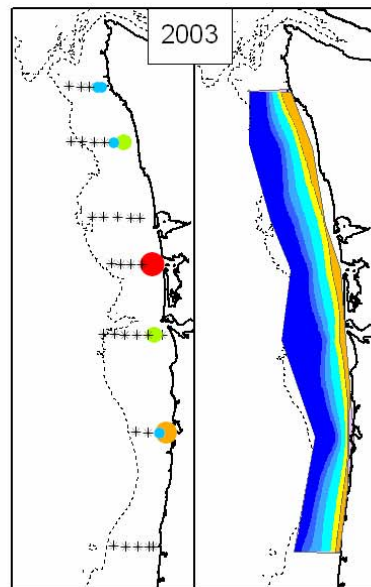
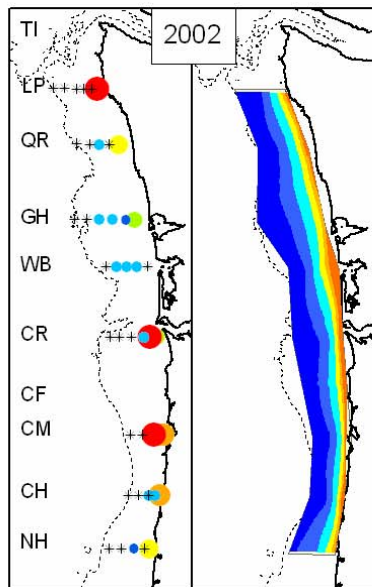
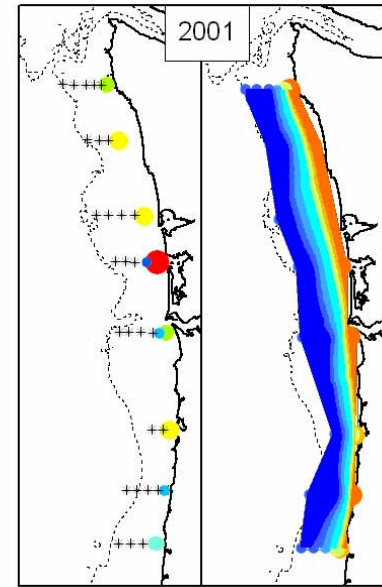
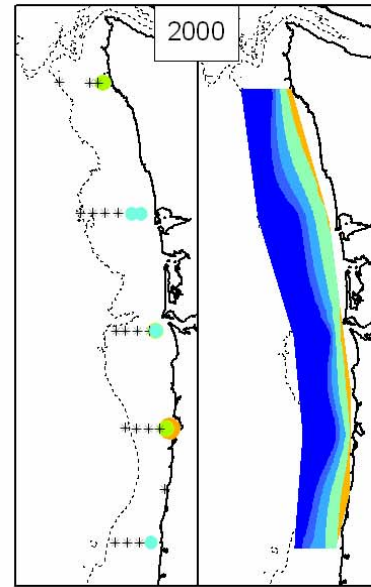
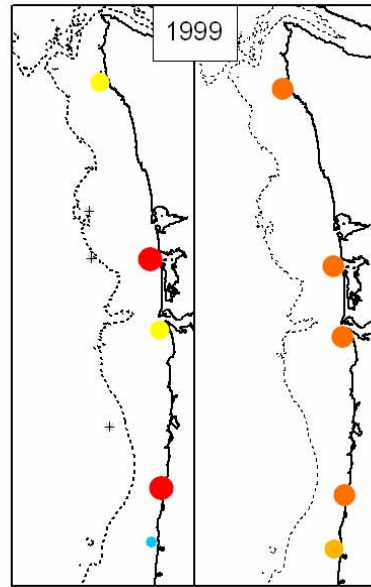
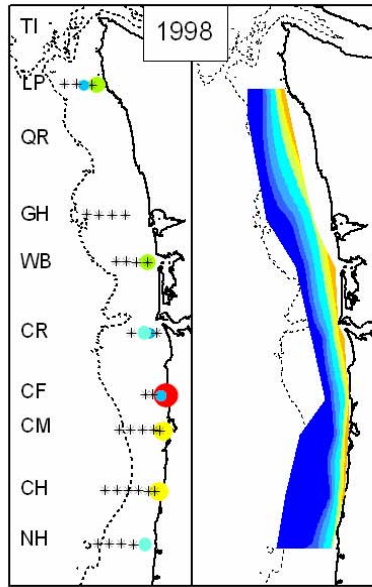
Maximum Likelihood Estimates

Parameter	DF	Estimate	Standard Error	Wald Chi-Square	Pr > ChiSq
Intercept	1	-5.3696	1.3445	15.9509	<.0001
Depth	1	0.0478	0.00708	45.5844	<.0001
Temperature	1	0.2087	0.1034	4.0773	0.0435

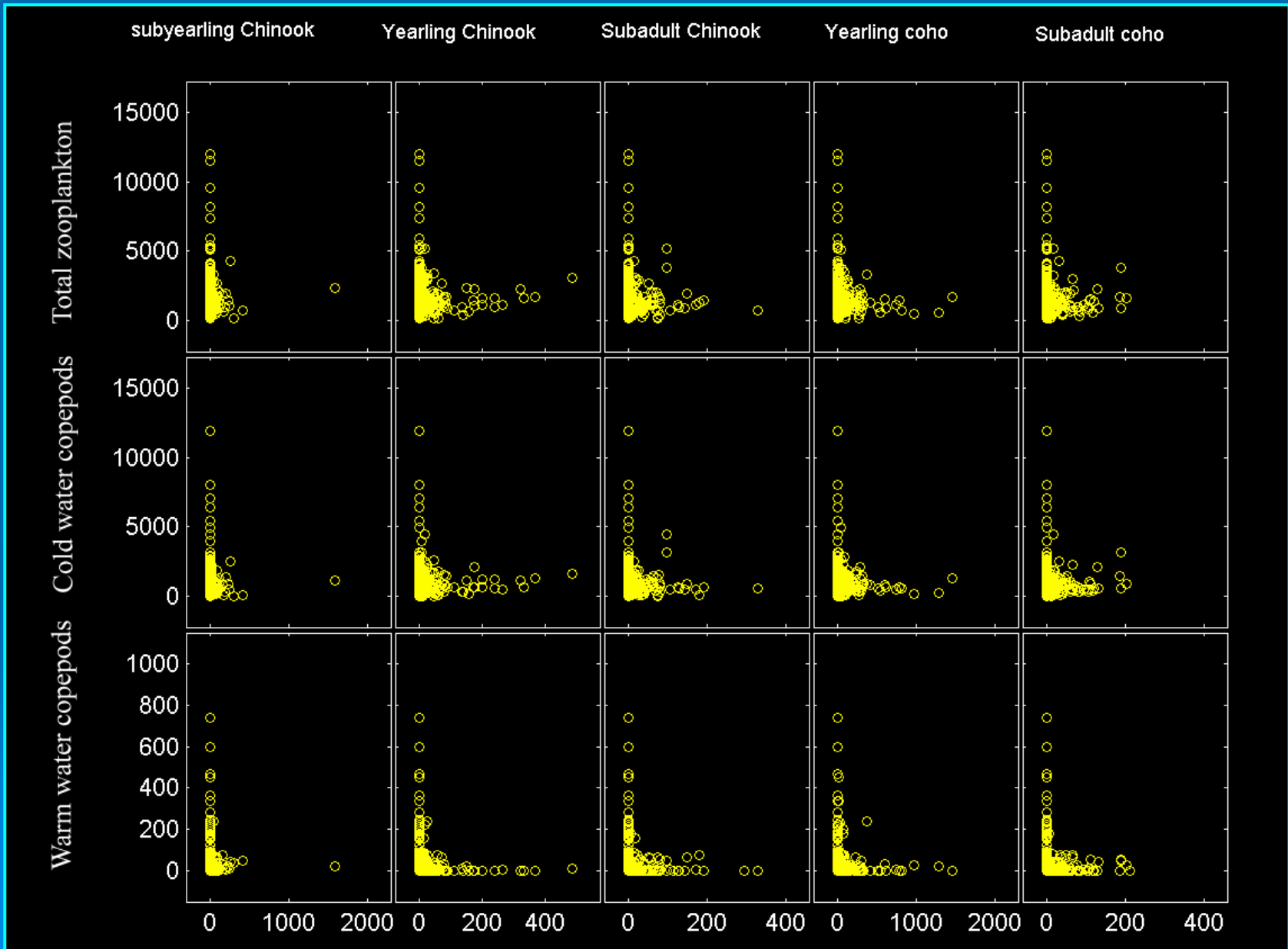
Hosmer and Lemeshow Goodness-of-Fit Test

Chi-Square	DF	Pr > ChiSq
8.6317	8	0.3743

September Subyearling Chinook



Zooplankton biomass



Small fish versus salmon

