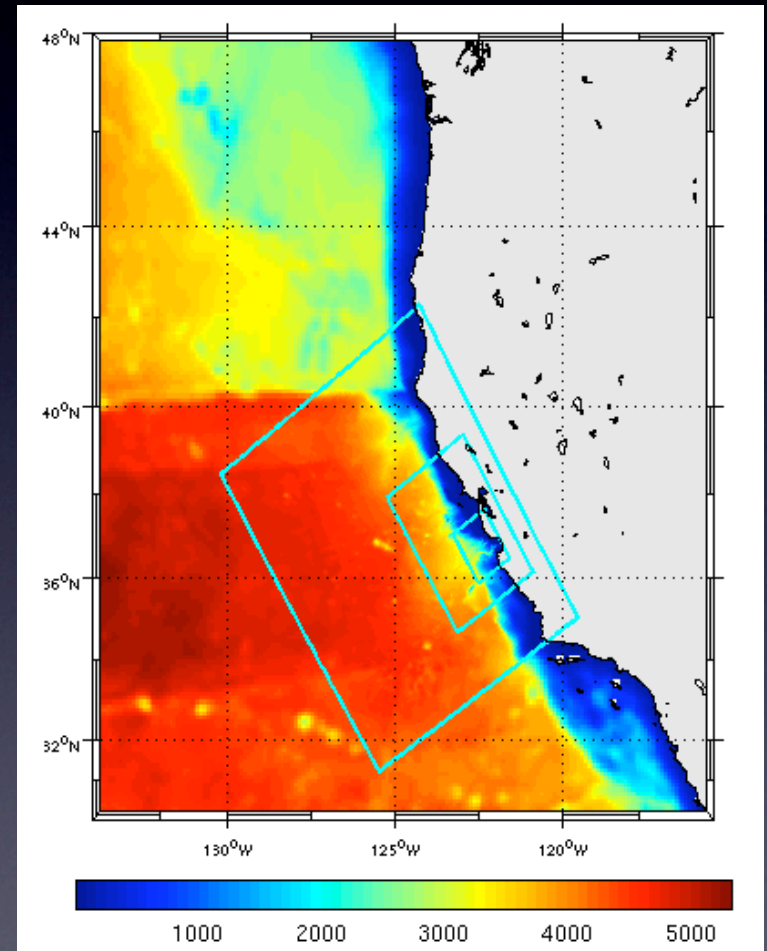
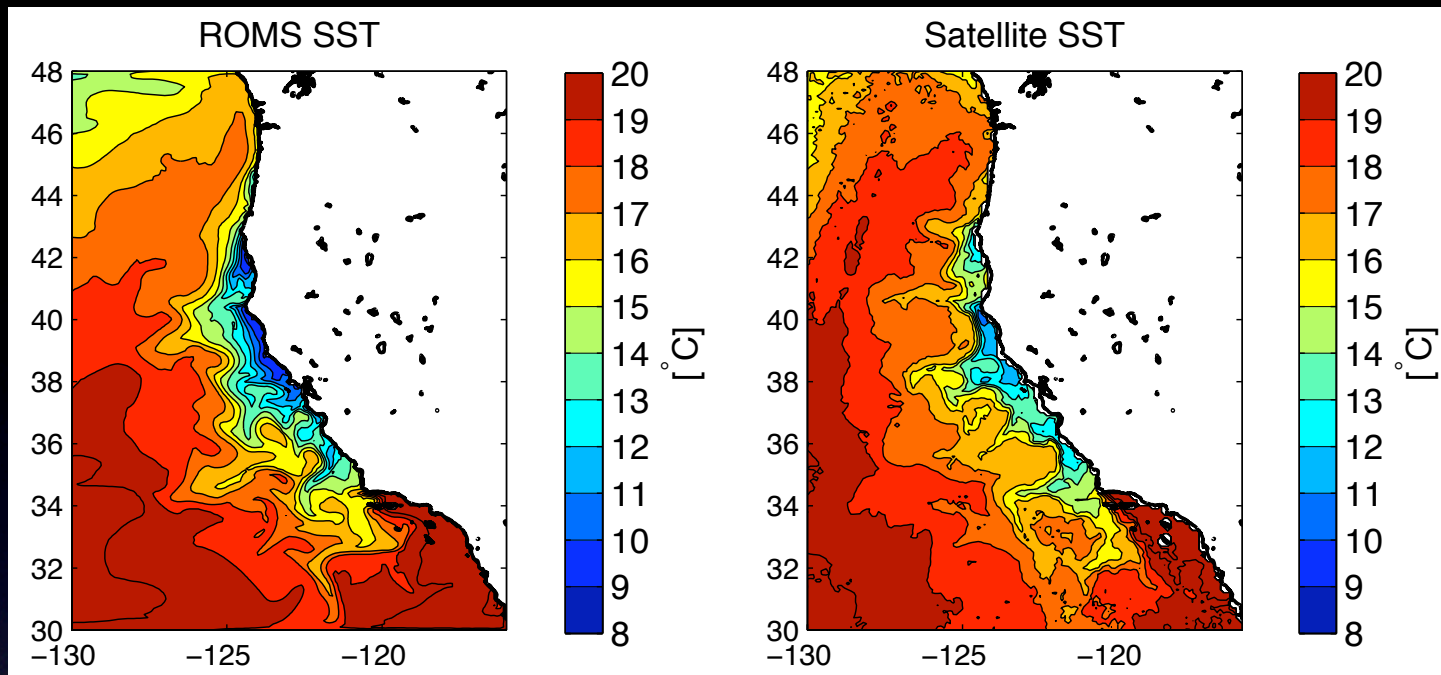


Christopher A. Edwards (UC Santa Cruz)

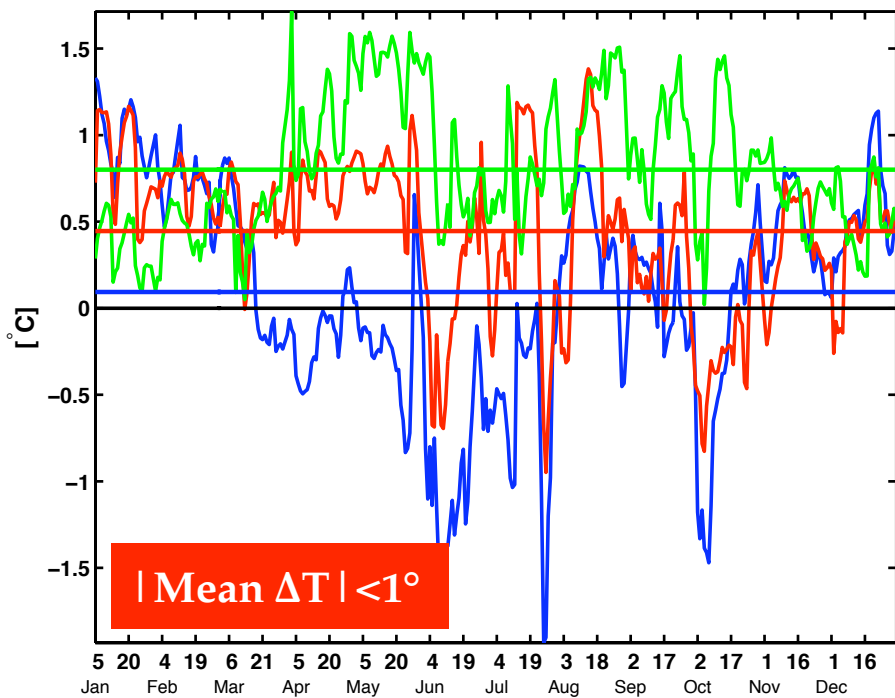
- Realistic Physical Modeling
- Data Assimilation
- Ecosystem Dynamics
- Larval Dispersion
- CCS (NEP)
- Event, Seasonal, interannual time-scales



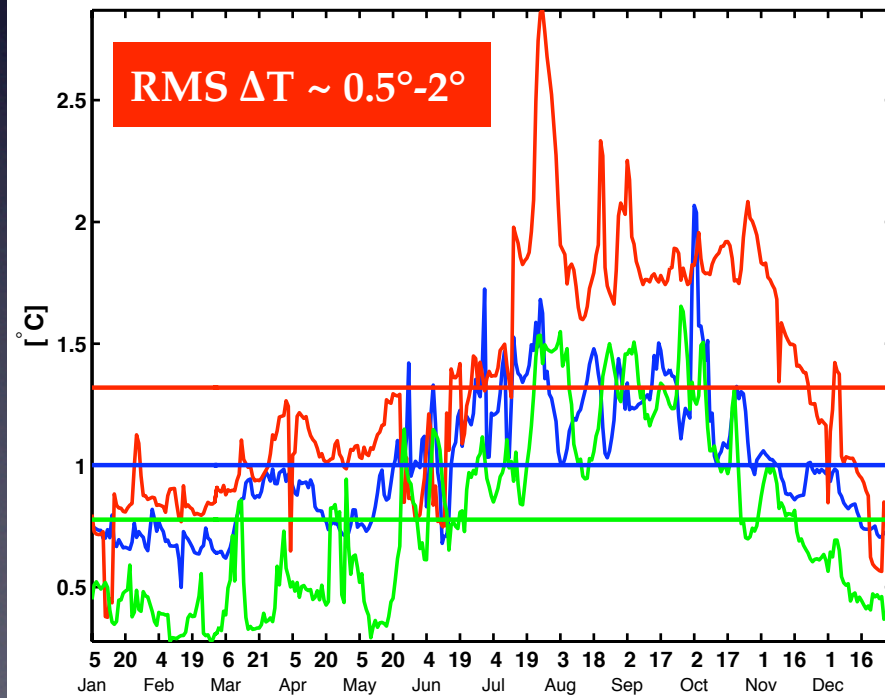
With: A. Moore, J. Zehr, S. Ralston, M. Follows, J. Barth, E. Curchitser, J. Doyle, M. Veneziani, P. Drake, C. Petersen, G. Broquet, N. Goebel, S. Rabouille, B. Powell, J. Feichter, D. Foley, M. Ellison, F. Schwing



2003 AVG difference OBS-ROMS in box 1.

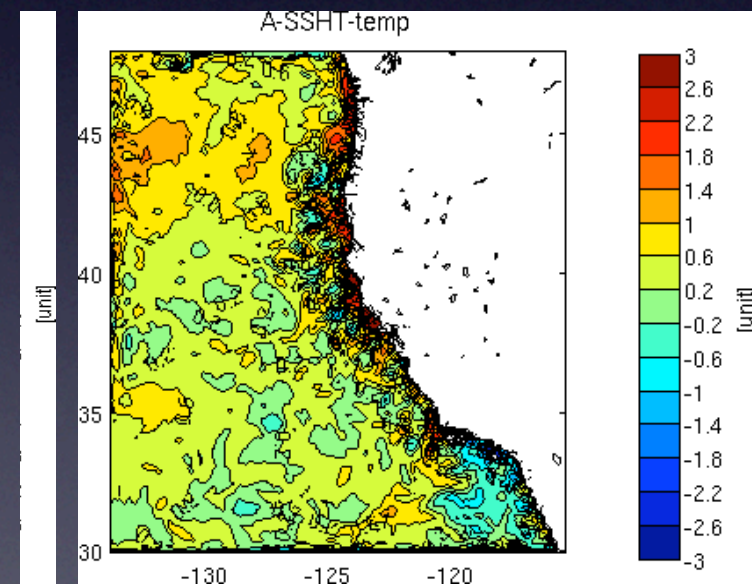
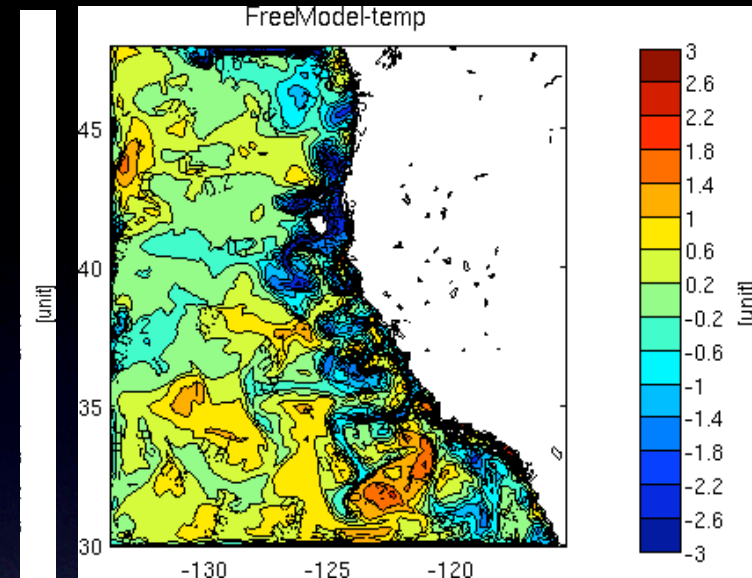
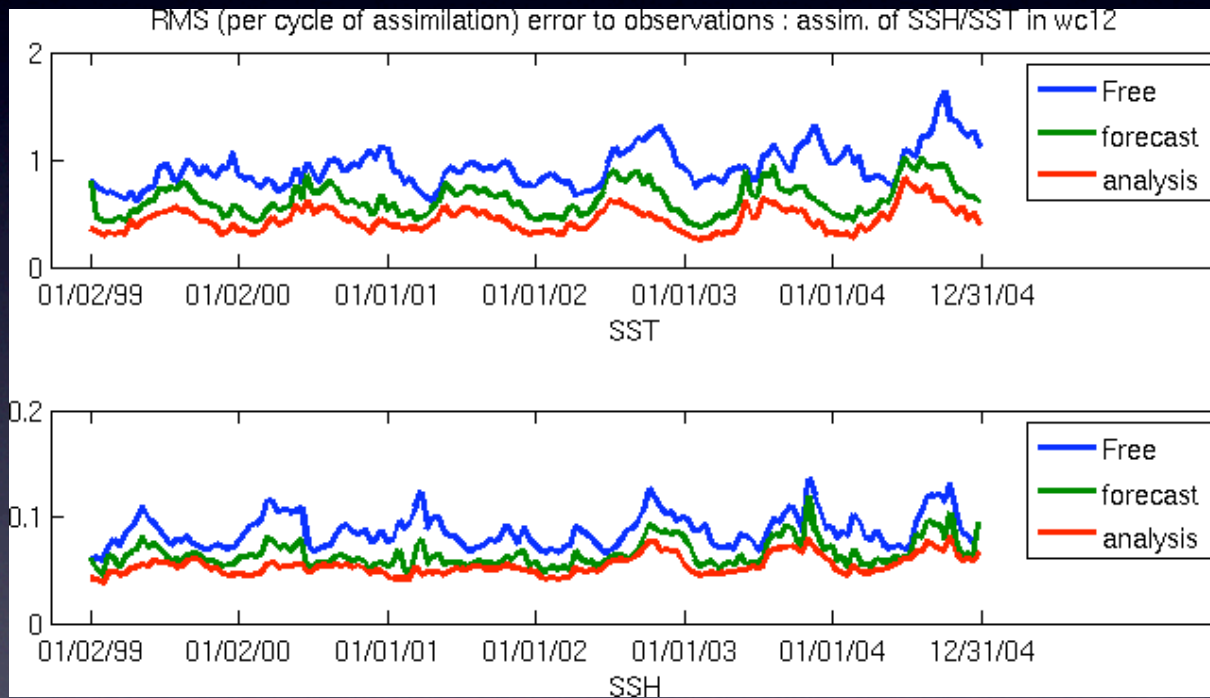


2003 STD difference OBS-ROMS in box 1.



IS4DVAR Data Assimilation

wc12 on 08/12/00



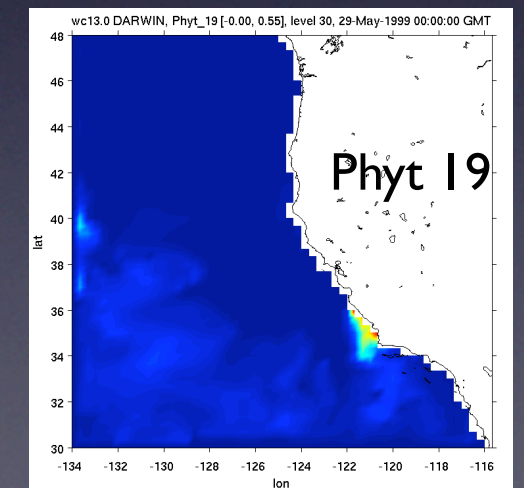
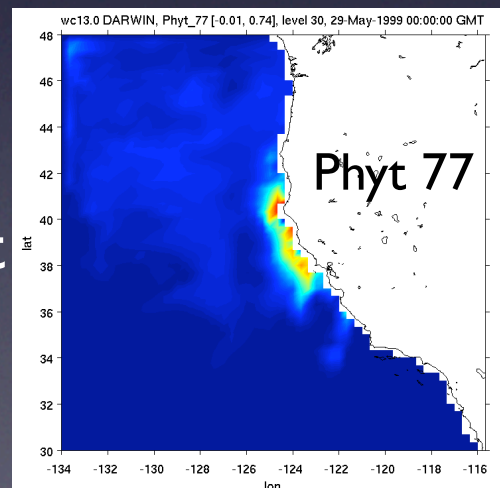
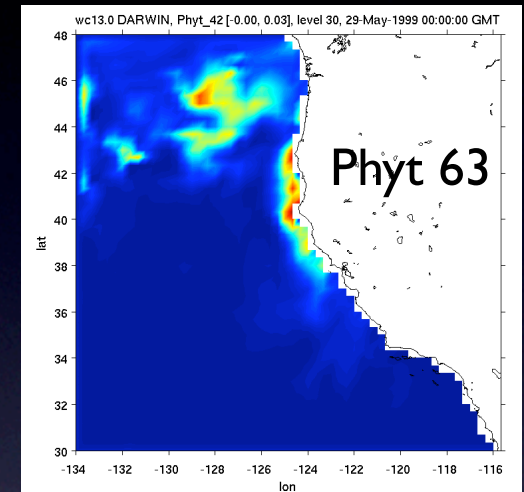
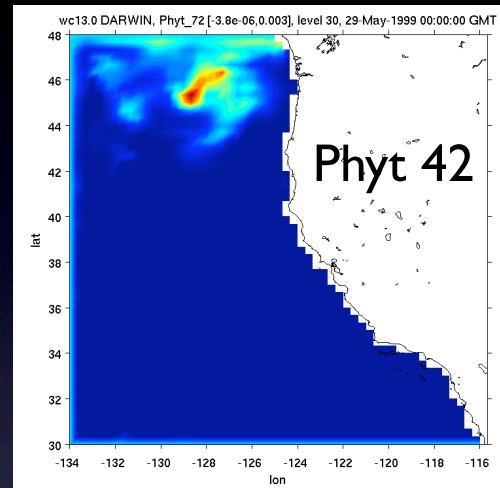
Assimilation of SSH/SST in wc12 : 2000-2005

Ecosystem modeling: NEMURO and DARWIN

Multiple P and Z classes

Test run 1 year

- Multiple populations co-existing
 - at different levels
 - geographically distinct

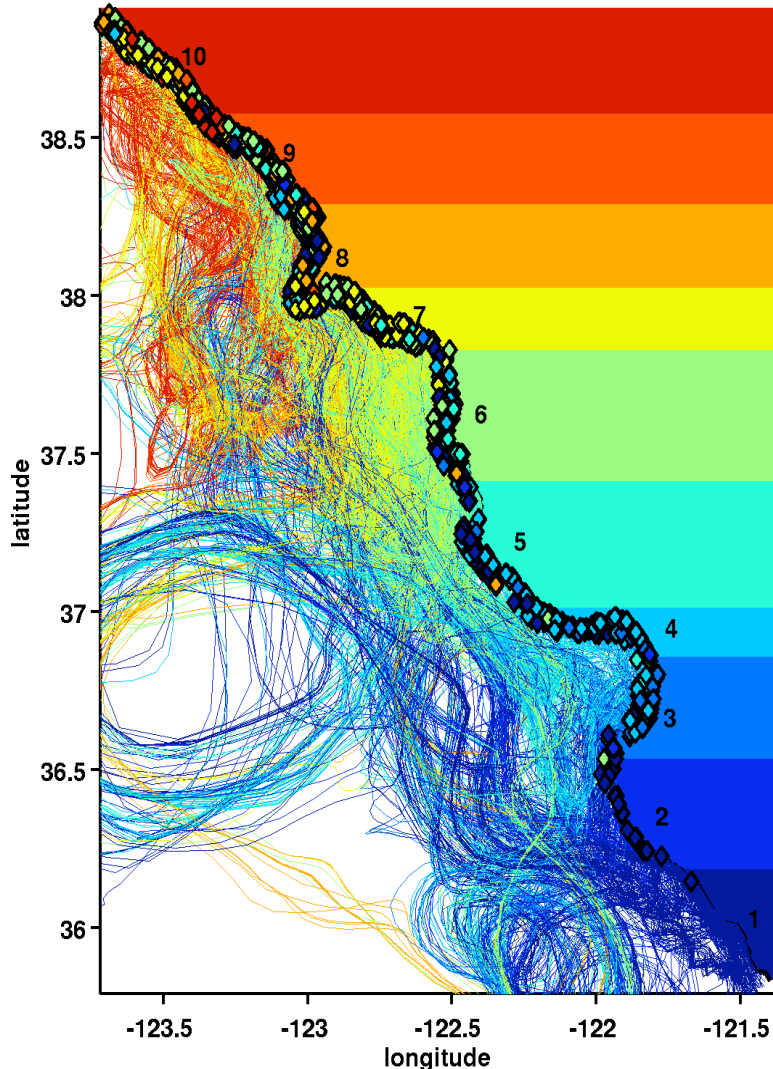


Dec.-Jan. Settler Trajectories (isobaric)

1 m

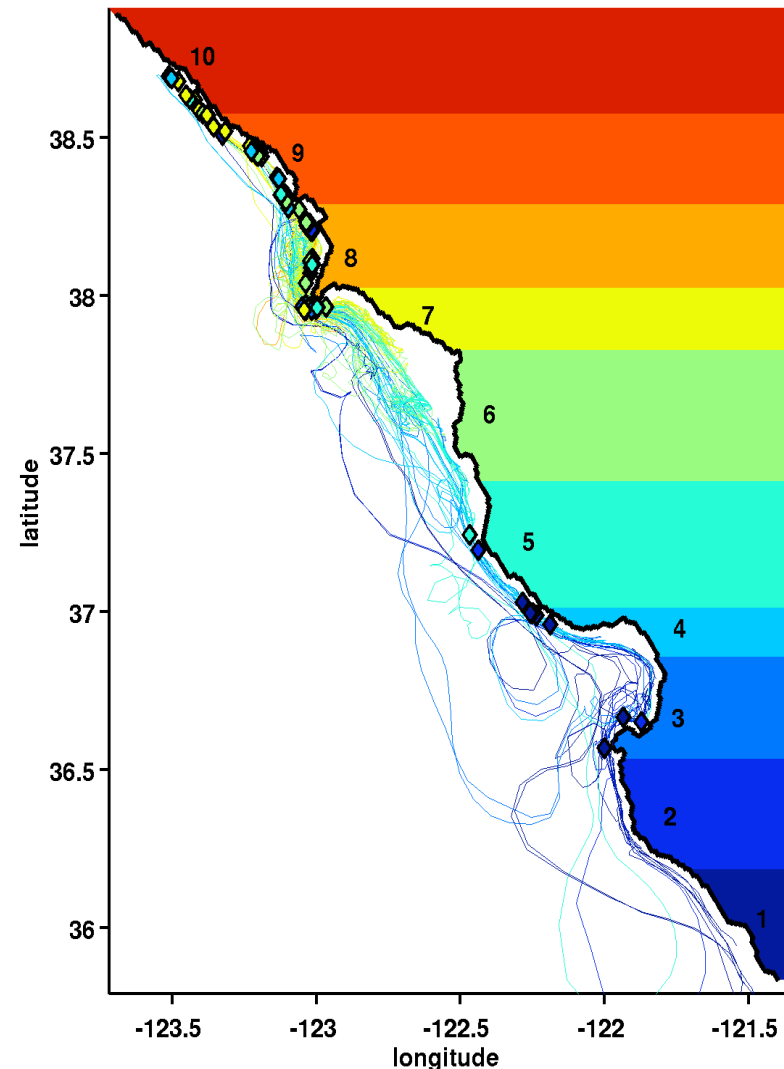
30 m

Trajectories: run08, files 21-22, isobaric floats, -1 m release, released 11/02/02-12/01/02
recruiting 11/30/02-01/14/03, plotting every 10(th) trajectory



min. allowable traj.=00 km, total -1 m recruiting fraction=26254/56763, recruiting age 28-45 days,
<40m isobath seeding, 4km recruiting radius, wc07b.2, COAMPS daily bulk forcing, coamps (from ECCO) bc

Trajectories: run08, files 21-22, isobaric floats, -30 m release, released 11/02/02-12/01/02
recruiting 11/30/02-01/13/03, plotting every 20(th) trajectory

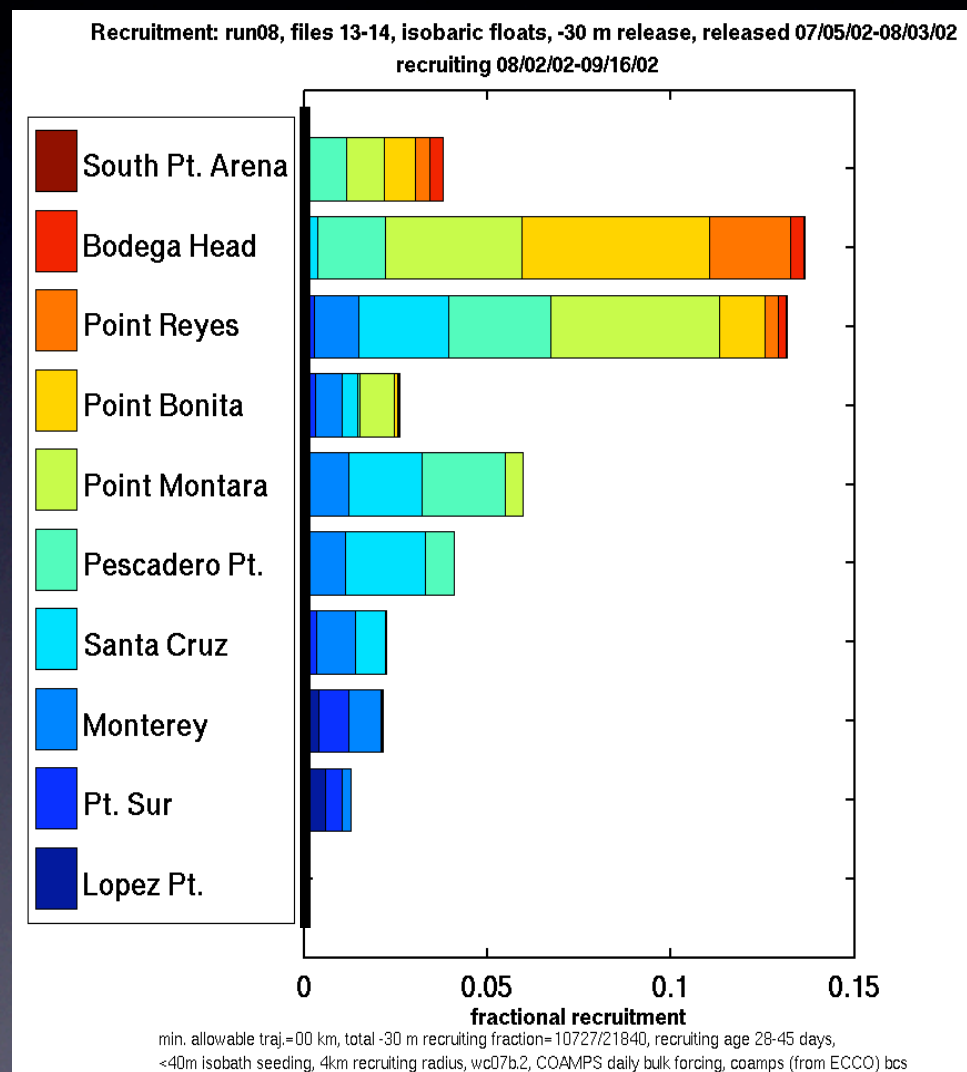
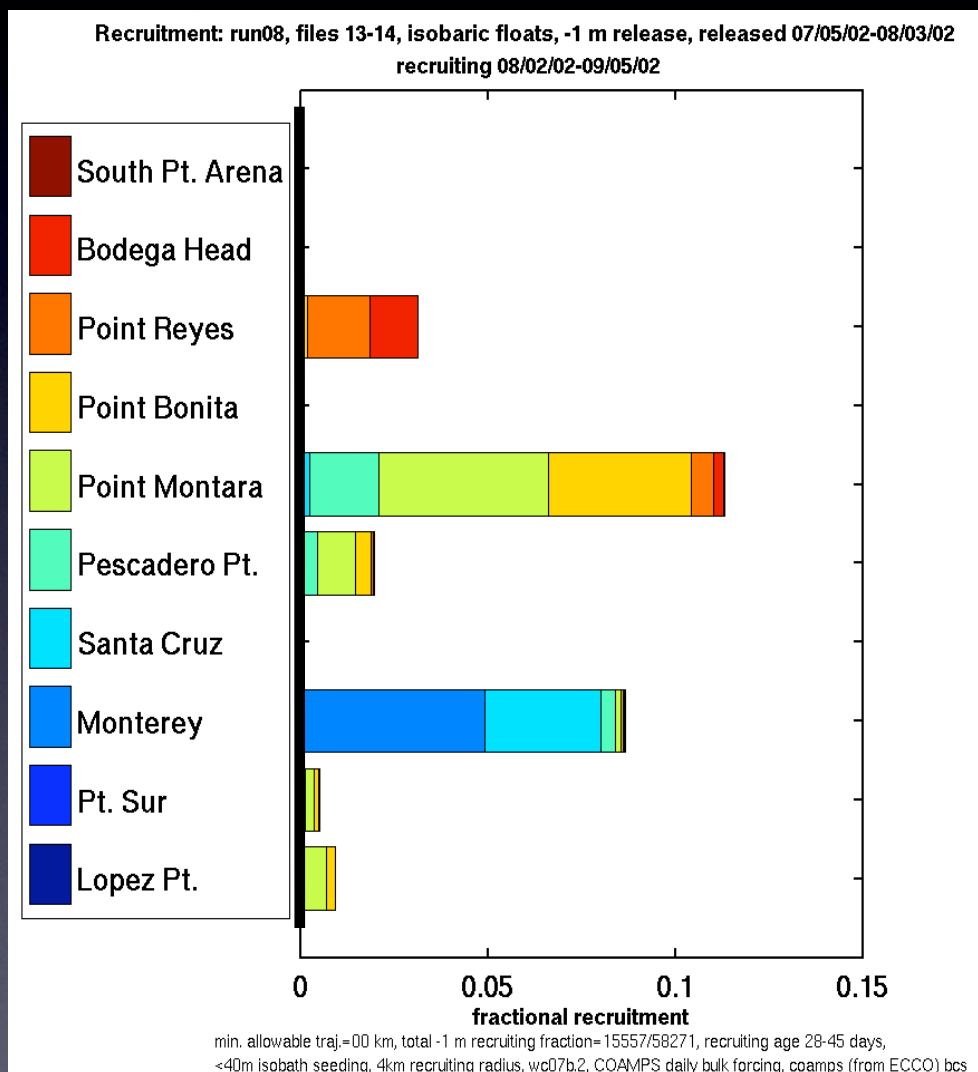


min. allowable traj.=00 km, total -30 m recruiting fraction=1558/21840, recruiting age 28-45 days,
<40m isobath seeding, 4km recruiting radius, wc07b.2, COAMPS daily bulk forcing, coamps (from ECCO) bc

Aug.-Sept. Settlement (isobaric)

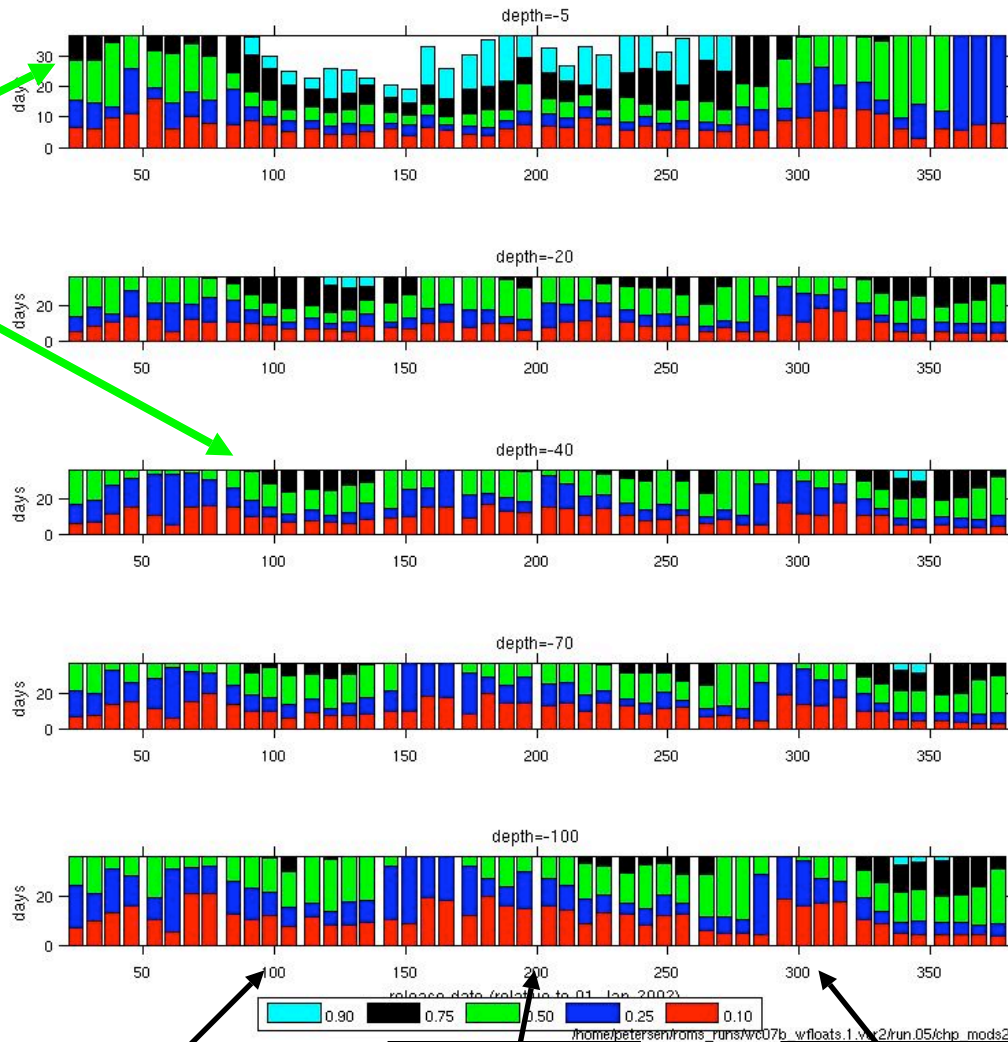
1 m

30 m



Time-To-Exit (days)

Number of days for fractional loss



50% loss

5 meters

20 meters

40 meters

70 meters

100 meters

April 11

July 20

Oct 28